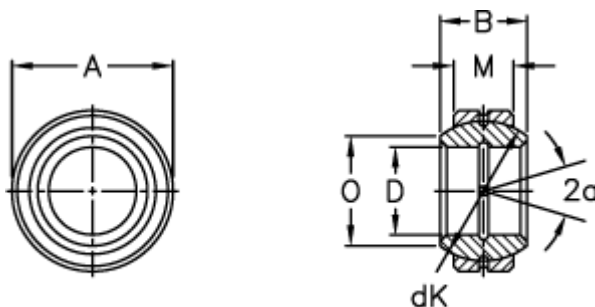


Article number: 03505006

Description: Fluro Rod end GE 6FO

Measures



Str. 6–12 uden smørerille

A	= 16 0 -0,008	Tilt angle = 21
B	= 9	Weight = 8
D	= 6 0 -0,008	
dK	= 13	
Dynamic load C (kN)	= 5.5	
M	= 5	
O	= 9.3	
Static load C0 (kN)	= 27.5	